

# The TeeCube Story



# About TeeCube

---

TeeCube is a System's Integration and an academic organization that strives to create smart infrastructure solutions and impart the highest level of practical knowledge in Infrastructure Management space.

We Currently Delve in 3 Verticals –

1. DCIM Solutions
2. Urban Transport Management
3. Creating Emergency Response Centres



# TeeCube Collaborations

---

TeeCube associates itself with Mr. Tee's developed Product line

TeeCube also associates itself with a few European MNCs for fulfilling the Hardware requirements of the infrastructure projects

TeeCube is in the process of creating a few value added tools also –

- a. Maintenance Management
- b. BI tool for Inventory analysis

TeeCube is going to start an ONLINE academic platform to impart knowledge on Infrastructure management

TeeCube Think Tank would continue to research on avenues to benefit the Govt, local bodies and the private societies.

## Technologies Used

---

Teevra and his colleagues started more than a decade back. They gave a few very smart products, which have been deployed across the country and gulf in multiple DCs, Metro's and Airports

# Highlights of the 1<sup>st</sup> full year

---

Executed the DCIM solution for BIAL's Data Centre with 700 odd RACKS

Completed first 10 stations of Dhaka Metro before the commercial launch

Completed TeeCube's first Analytics solution installation in Prayagraj smart city

70% completion of Aizawl Smart city – Command and Control Center

50% completion on Jammu SDC– BMS project

Final Negotiations going on 2 Metro Projects, 2 Data centre projects, and few other minor projects

Preparation in full swing for launching new TeeCube Website and TeeCube Academy

## Plans for the Yr Next 2023-24

---

- To enter the area of Business Analytics in our given verticals, i.e
  1. Datacenter – Focusing on PUE/Energy Mgmt and Inventory Mgmt
  2. Urban Transport – Analysis on integrating urban transports of all cities
  3. Emergency Control Center – To analyze the minimal possible time to execute the most critical jobs
- To train partner community on “Infrastructure management”
- Industrial belt's Infra mgmt and security mgmt is still untouched – We are planning to launch a central command solution to monitor these remote locations

# TeeCube Uniqueness

---

With our collective knowledge of over 100 years between our consultants, demo specialists, and product experts, we have planned to work as a **Factory – Shop** format – In the areas expertise in

- Building **command and control centres** for a few verticals to start with. The approach would be end to end if required

---

The Verticals are -

1. Datacenters
2. Smart Cities
3. Community Security
4. Emergency command and control Centers



We are capable to demonstrate our solution live from a site or simulate the situation, in accordance with customer's requirement

# TeeCube – Portfolio - DCIM

---

We are constantly evolving our portfolio and would like to guide the industry with emerging flavours of the technologies we offer.

---

## What do the researchers suggest (on DCIM)

### Gartner Research Suggests

Effective data center management is essential in today's hybrid environments, yet the increasing complexity of infrastructure makes this difficult. I&O leaders must combine the insights from DCIM tools with other sources to maximize the value data centers contribute to the overall organization.

### Zion Research Suggests

Data Center Infrastructure Management (DCIM) Market- By Application (Business Intelligence & Analytics, Power Monitoring, Capacity Planning, Asset Management, and Environment Monitoring), By Deployment (Cloud and On-Premise), By Data Center Type (Cloud & Edge Data Center, Colocation Data Center, Managed Data Center, and Enterprise Data Center), By Component (Services and Solution), and By End-User (Healthcare, IT & ITES, BFSI, Government & Public Sector, and Telecommunication): Global Industry Perspective, Comprehensive Analysis, And Forecast, 2022–2028

# Portfolio – Data Centre



## Athenta DCIM Reviews {Now TeeCube}

4.7 ★★★★★ 9 Ratings

Compare

Write A Review

Download PDF

Overview

Reviews

Alternatives

Likes and Dislikes

### Product Features and Ratings

Reporting/Dashboards	4.8		(9)
Environmental monitoring	4.9		(9)
Power monitoring	4.8		(9)
Resource management	4.7		(9)

### Reviewer Insights and Demographics

#### Company Size

<50M USD	11%
50M-1B USD	78%
10B+ USD	11%

#### Industry

IT Services	33%
Services (non-Government)	33%
Government	22%
Transportation	11%

#### Deployment Region

Asia/Pacific	89%
Europe, Middle East and Africa	11%

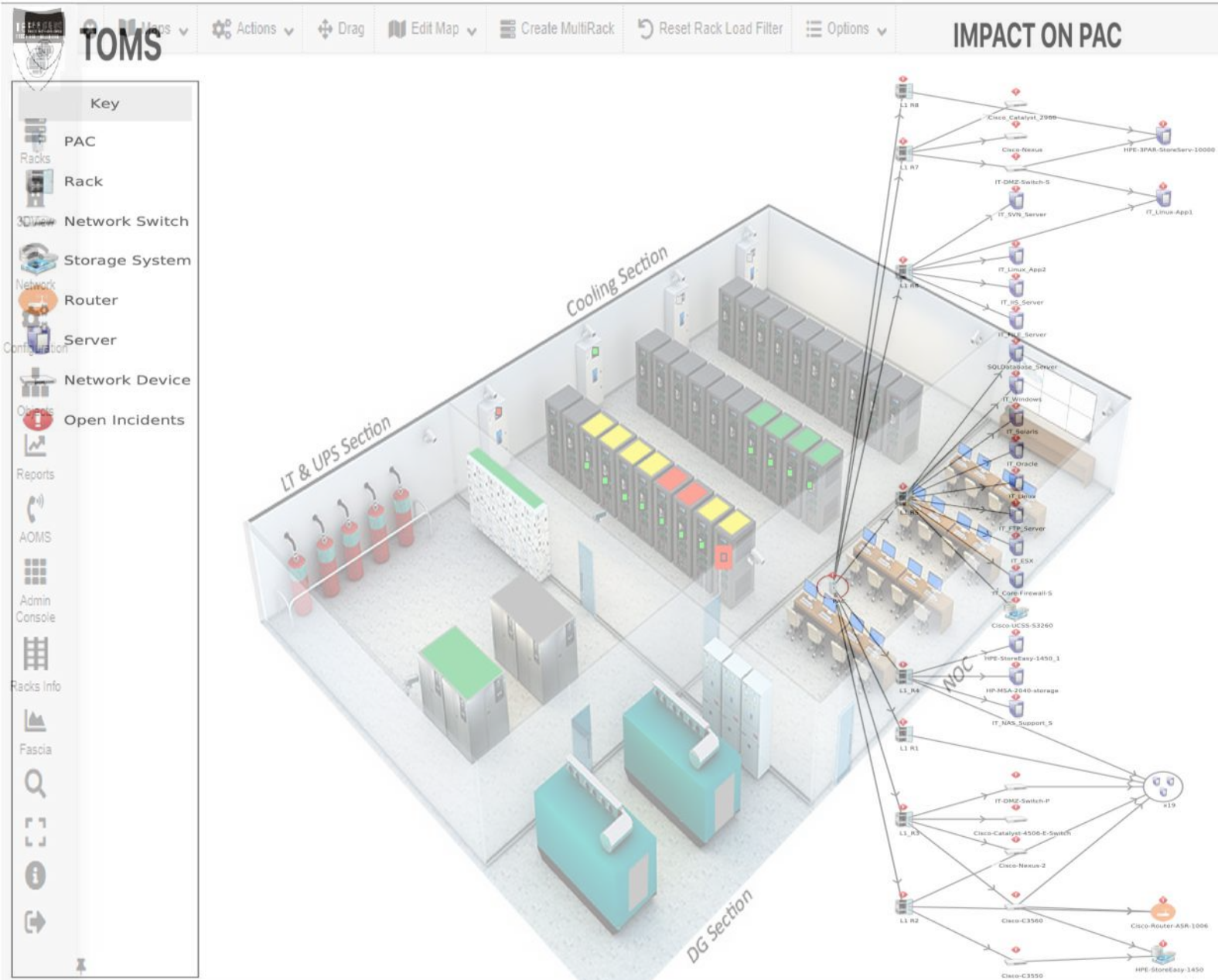
Ready to show a live demo of a **DCIM Solution** as and when required.

Data Centre Infra Management -

- Scaling from 100 to a 1000 Rack DC with minimal efforts
- Power Supplies and cooling always in tandem
- Rack and Space Provisioning
- End to end Inventory management for all equipments in the DC
- Asset mgmt and their instant availability in the DC
- UPS and its Battery status at any point of time
- SLD for the networks and electrical connections side by side

# Uniqueness in Data Centre Mgmt

We are constantly evolving our portfolio and keep guiding the industry with newer flavours in DCIM technology.





# Data Centre – Provisioning

**TOMS**

All Organizations

**Dashboard**

- Overview
- SecondDashboard
- Shortcuts

User > Overview

Incident based on devices

Device	Count
IT-DMZ-Switch-P	5
IT-DMZ-Switch-S	3
Cisco-Catalyst-4506-E-Switch	5
PAC	4
Cisco-C3560	5
Cisco-C3550	2

Impact analysis

Name	Impact Analysis
Cisco-C3550	Impact
Cisco-C3560	Impact
IT-DMZ-Switch-P	Impact
IT-DMZ-Switch-S	Impact
PAC	Impact
PAC_2	Impact

search

**CMDB**

Request Management

Work Order Request Management

Incident Management

Problem Management

Change management

Service Management

Data Administration

AOMS Configurations

System Conf

**Operation Management**

Incident Service Wise

Total: 1278 objects.

Service	Count
Internal	398
Equipment Commissioning	40
Equipment Movement	29
Equipment Removal	34
Rack Provisioning	2
Linux-Machine-A1079_Availability	21
Linux-Machine-A1079_CPU_Usage	136
Linux-Machine-A1079_Memory_Usage	29
Linux-Machine-A1079_System_Logs	8
Linux-Machine-A1079_UpTime	15
Linux-Machine-A1079_network_port	23
Linux-Machine-A1079_system_load	442
Compeleent-FS8600_network_port	1
Linux-Machine-A1090_network_port	50
Cisco-Catalyst-4900M_Interface_Status	1
Cisco-Catalyst-4900M network port	3

Incident Management

Total: 1278 objects.

Pages: 1 2 3 4 ... 128 10 objects per page

Incident	Title	Organization	Requester	Start Date	Status	Agent
I-003754	Service Down on PAC	Athenita	Support User	2019-01-22 22:56:04	New	
I-003753	Service Down on L1_R3	Athenita	Support User	2019-01-22 22:55:53	New	
I-003752	Service Down on L1_R4	Athenita	Support User	2019-01-22 22:55:47	New	
I-003745	4 Dell-PowerEdge-2650 Servers @ 0.5KWh of 2U need to be installed.	Athenita	Sales Manager	2019-01-22 21:49:01	Escalated ITR	Self Admin
I-003744	Service Down on Linux-Machine-A1090	Athenita	Support User	2019-01-22 20:24:48	Escalated TTO	
I-003743	Service Down on Linux-Machine-A1090	Athenita	Support User	2019-01-22	Escalated TTO	

# TeeCube – Portfolio - TCMS

---

We are constantly evolving our portfolio and would like to guide the industry with emerging flavours of the technologies we offer.

---

## What do the researchers suggest (on Urban Transport)

### Zion Research Suggests – Growth Factors

The TCMS market growth can be attributed to the factors such as the increased trend in the utilization of the automated metros and high-speed trains, strict protocols regarding the emission of diesel and urbanization. The factor that people now prefer for safe, speedy and comfortable transportation has boosted the TCMS market positively. The government is also taking initiatives and are investing in the rail infrastructure so that the railway transportation is increased, thus boosting the TCMS market. There is an increasing demand for the TCMS systems from the emerging economies thus contributing to the market growth. The factors that are affecting the market negatively are a lack of interoperability and high cost involved in the maintenance and infrastructure.

### Verified Market Research <https://www.verifiedmarketresearch.com/product/tcms-market/> Suggests

The lack of interoperability and the high cost involved in the maintenance and infrastructure are the major factors expected to hamper the market growth during the forecast period. The infrastructural costs, coupled with the costs associated with equipment, land acquisition, and financing, act as a restraint for the market. Nevertheless, increasing demand for the TCMS systems from the emerging economies is expected to generate huge growth opportunities for the TCMS market during the forecast period.

# Uniqueness in Urban Transport

---



TRANSDAQ DOSSIER-  
PROJECTS UNDER THE UTCMS

## Our Key Installations in India and GCC Countries

To name a few projects off our marquee customer's list:

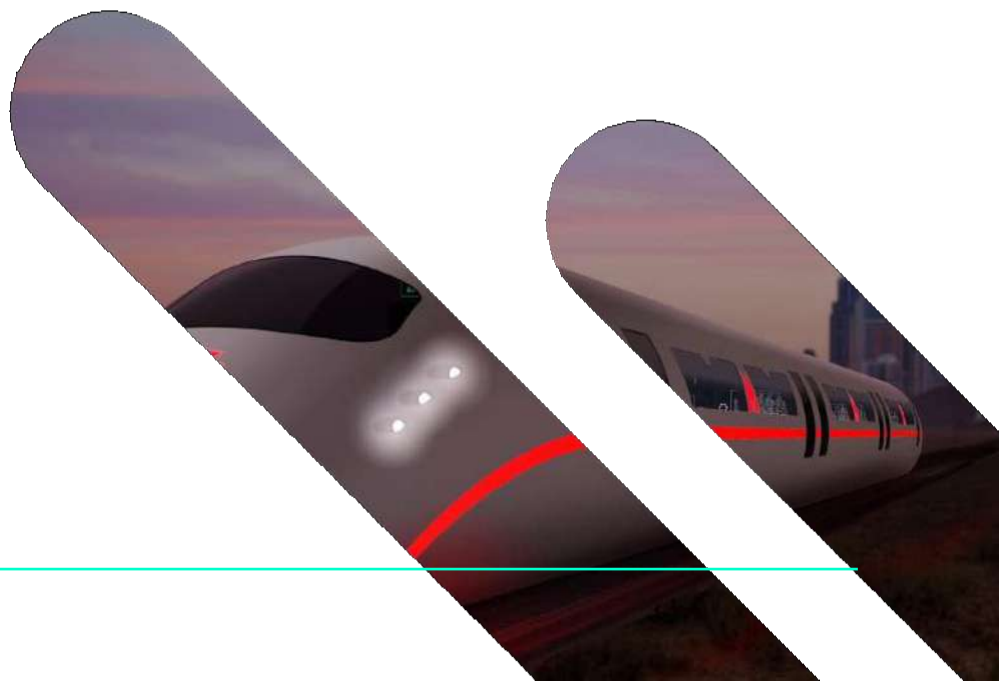
- Gurgaon Metro Facilities SCADA – Phase 1 and 2.
  - Oman air Ticketing Center Management – Muscat.
  - Executing Kolkata Metro S&T SCADA – Phase 1 with Hitachi STS.
  - Dhaka metro project through L&T Rail.
  - Command and control Centre T2 & T3 BIAL Airport
- 

Can organize a Live Demo from one of our Supported sites

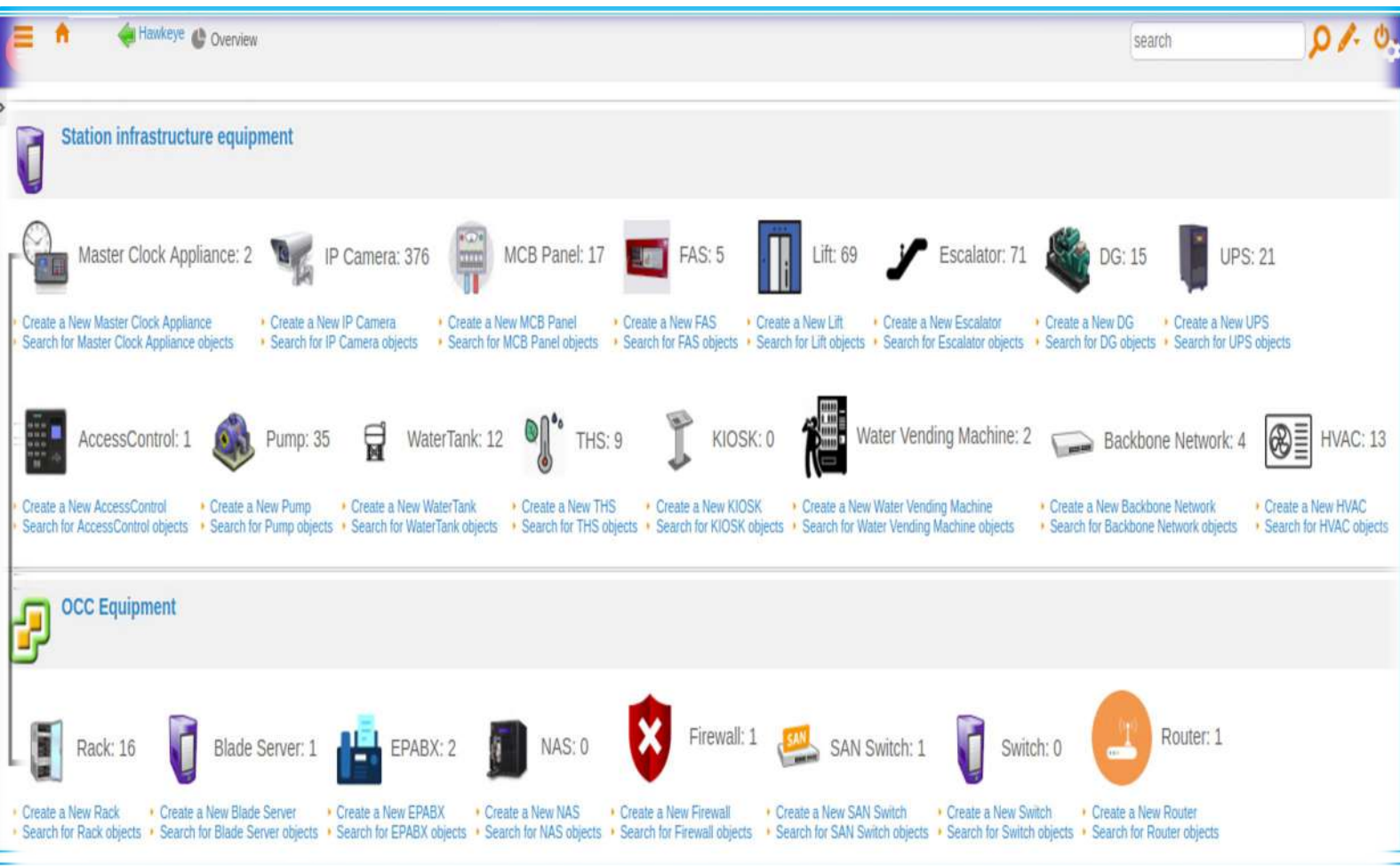
Would be able to show an integrated approach of Train Management and control

Would be able to showcase an integrated Bus and Depot mgmt Solution

A ticketing platform which would include even the last mile e-Rickshaws to home



# Uniqueness in Urban Transport



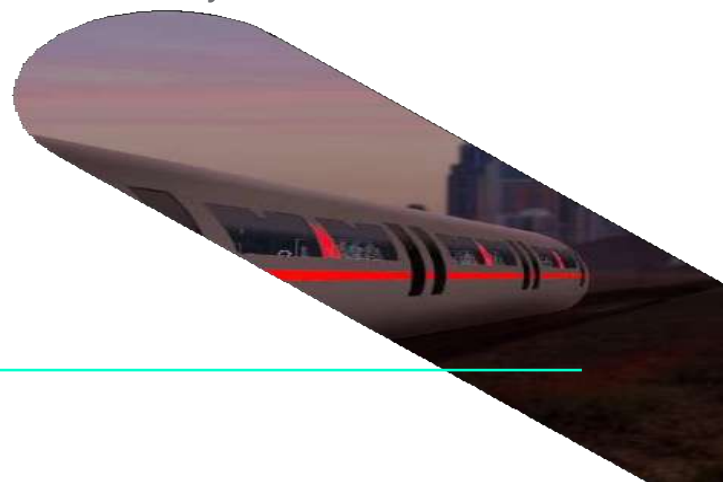
Can organize a Live Demo from one of the Support sites

Would be able to show an integrated approach of Train Management and control

Our Solution comes with Hardware based HA and DR solution

Would be able to showcase an integrated Bus and Depot mgmt Solution

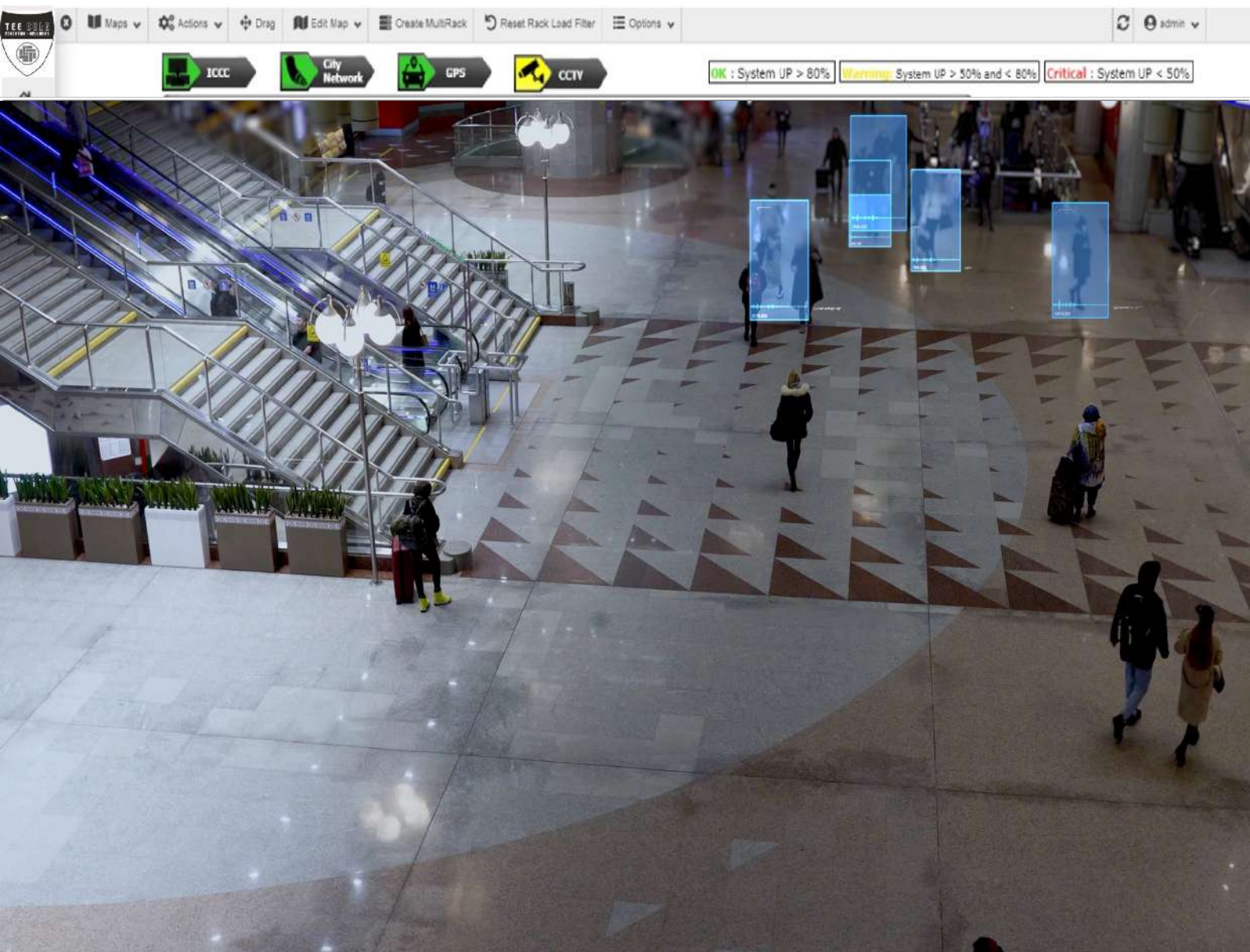
Full Solution on Inventory mgmt to the journey of the inventory and its retirement



# Uniqueness in Community Security

In the past we have bagged 2 orders -

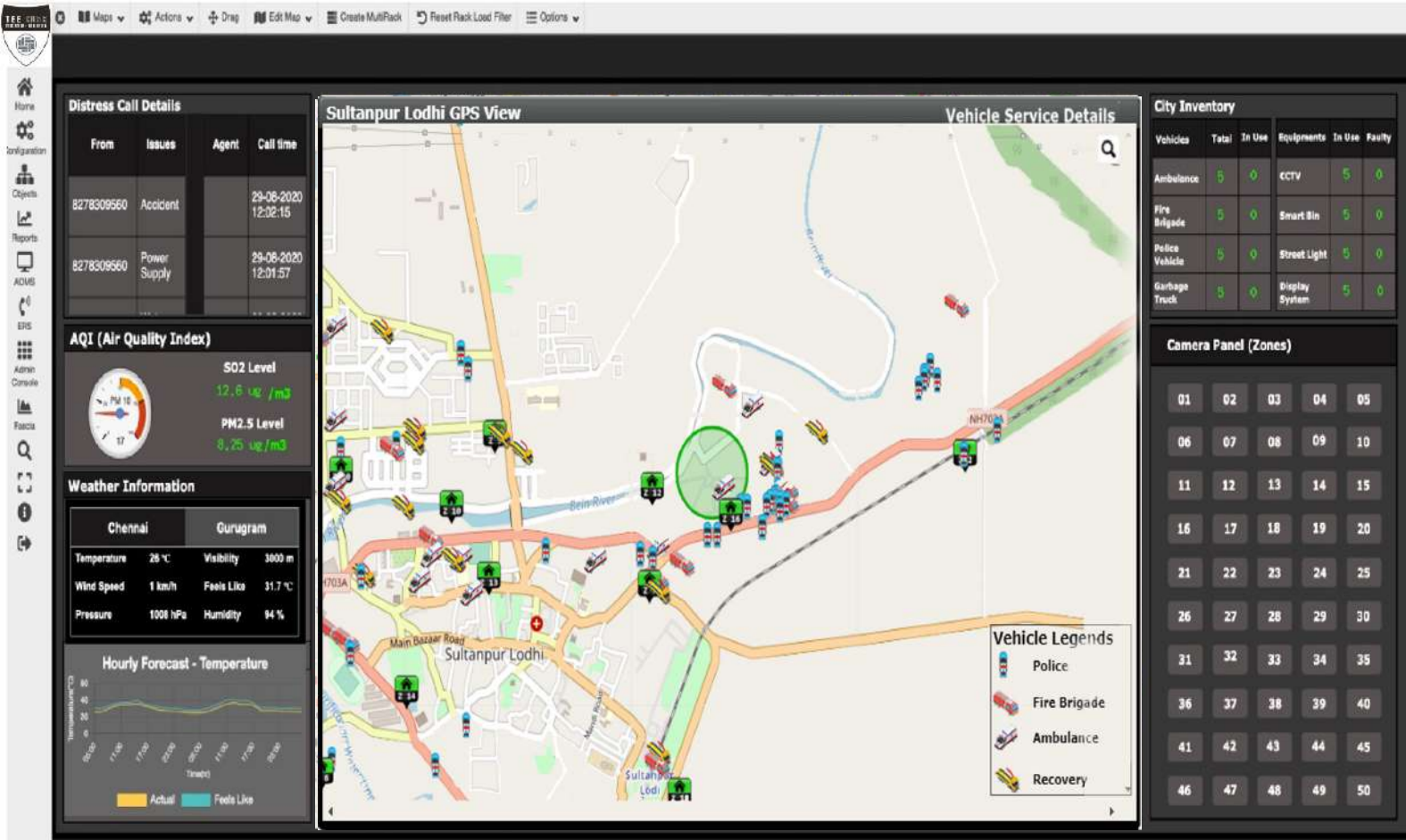
1. CCTNS, Delhi Police – Command and Control (2018)
2. Command and Control Center for 550<sup>th</sup> Guru Prakash Parv – Punjab Police (2019)



Few Solution Providers think that, such would Sell.....But in the real world this Doesn't work...

# Uniqueness in Community Security

While focusing on the City or community as a project



Need to focus on the Personnel managing the command Center

Vehicle	IMEI	Registration No.	Sim No	Current Location (Lat Long)	Home Zone	Battery	Last Updated
Vehicle-002	861359037373758	PB 09 Q 2819	5756160051828	<a href="#">31.2126233333, 75.1928683333</a>	South Zone	13.5	2019-11-03 08:30:45
Vehicle-003	861359037422548	PB 09 X 6110	5756160051829	<a href="#">31.3393166667, 75.2068966667</a>	North Zone	13.4	2019-11-05 06:06:19
Vehicle-004	869867030428793	PB 07 R 1366	5756160051845	<a href="#">31.3165616667, 75.595055</a>	West Zone	11.6	2019-11-02 04:56:50
Vehicle-005	861359037411681	PB 09 X 6114	5756160051830	<a href="#">31.22876, 75.3065616667</a>	East Zone	11.9	2019-11-04 11:07:23
Vehicle-006	861359036837613	PB 10 BS 1908	5756160057810	<a href="#">31.2224116667, 75.1836466667</a>	East Zone	14.4	2019-11-05 14:37:38
Vehicle-007	861359036844858	PB 19 C 5885	5756160057811	<a href="#">31.1247316667, 75.0997033333</a>	East Zone	13.3	2019-11-05 14:40:22
Vehicle-008	861359036809968	PB 09 N 9177	5756160057812	<a href="#">31.22093, 75.207605</a>	East Zone	13.0	2019-11-05 14:37:17
Vehicle-009	861359036964599	PB 29 X 2952	5756160057813	<a href="#">31.2780266667, 75.186015</a>	West Zone	13.1	2019-11-05 14:40:09
Vehicle-010	861359036859856	PB 10 FV 0466	5756160057814	<a href="#">31.21985, 75.207905</a>	South Zone	12.8	2019-11-03 10:42:06
Vehicle-012	861359036837977	PB 32 P 5812	5756160057816	<a href="#">31.219585, 75.2081183333</a>	South Zone	12.6	2019-11-03 20:32:40

Along with Various inventory

# Infrastructure Mgmt Opportunity

---

The infrastructure sector in India has a bright future and long-term growth prospects. There is also a growing consensus that the growing infrastructure improvement can have a strong impact on poverty alleviation and that it can also reduce supply-side constraints on primary commodities through proper and adequate mobilization of resources.

Currently, as much as 40% of the global infrastructure investments are in the Energy Sector, while another 36% is spent on Roads and Bridges. Other infrastructure sectors, including Rail, Airports, Telecom, etc., account for the remaining 24% of the total global investment in infrastructure and allied sectors.

---

## WHY INFRASTRUCTURE MANAGEMENT NEEDED?

- To ensure business continuity
- To enhance production capacity
- For proactive maintenance
- For proper mobilization of resources
- For reduction in business operation costs

**Possibly there's need of an  
Organisation like  
"TeeCube Business Solutions (P) Ltd"**

# We are also launching “B to B” Courses on Infrastructure Management

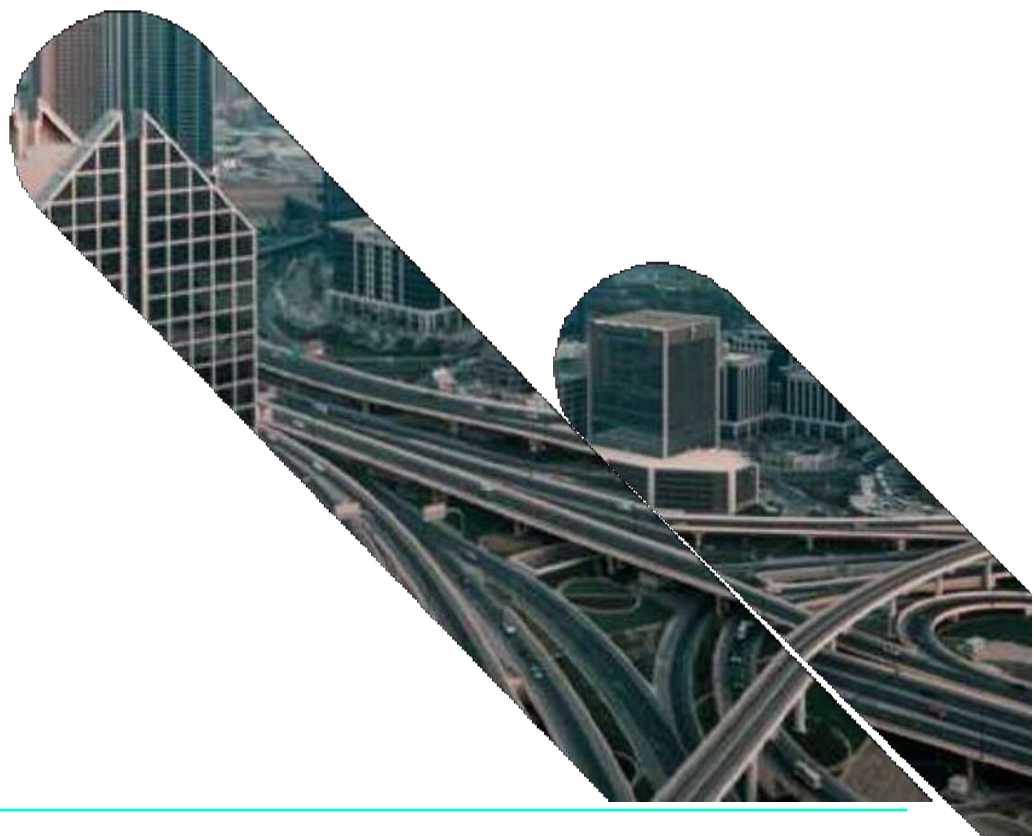
---

## Why opt for our course?

TeeCube brings together a few decades of hands on experience in the infrastructure sector. Experiences of a few veterans have been compiled to prepare these courses.

With 40% theory, the students would be able to witness 60% of live infrastructure problems, getting sorted in front of them.

Our customized trainings not only prepares the students to learn the technology but also them for the vertical best practices







# Thank You

See if You Can See your Future With Us

**Email ID** : [info@tcubesol.com](mailto:info@tcubesol.com)

**Website** : [www.teecubesol.com](http://www.teecubesol.com)